









RIVER STOUR
CHANNEL DREDGED TO -14.5 CD

HARWICH
HARBOUR

NOTES.

KEY

-  Phase 0
-  Phase 1
BSB - Bathside Bay
SBH - Small Boat Harbour
-  Phase 2
-  Phase 3
-  Phase 4
-  Existing flood wall bund

NOTE

Dedicated cycle lanes to be included within Phase 2.

A PHASE EXTENTS UPDATED TO SUIT
REVISED MASTERPLAN 16.07.21

REV	DESCRIPTION

 HUTCHISON PORTS
HARWICH INTERNATIONAL

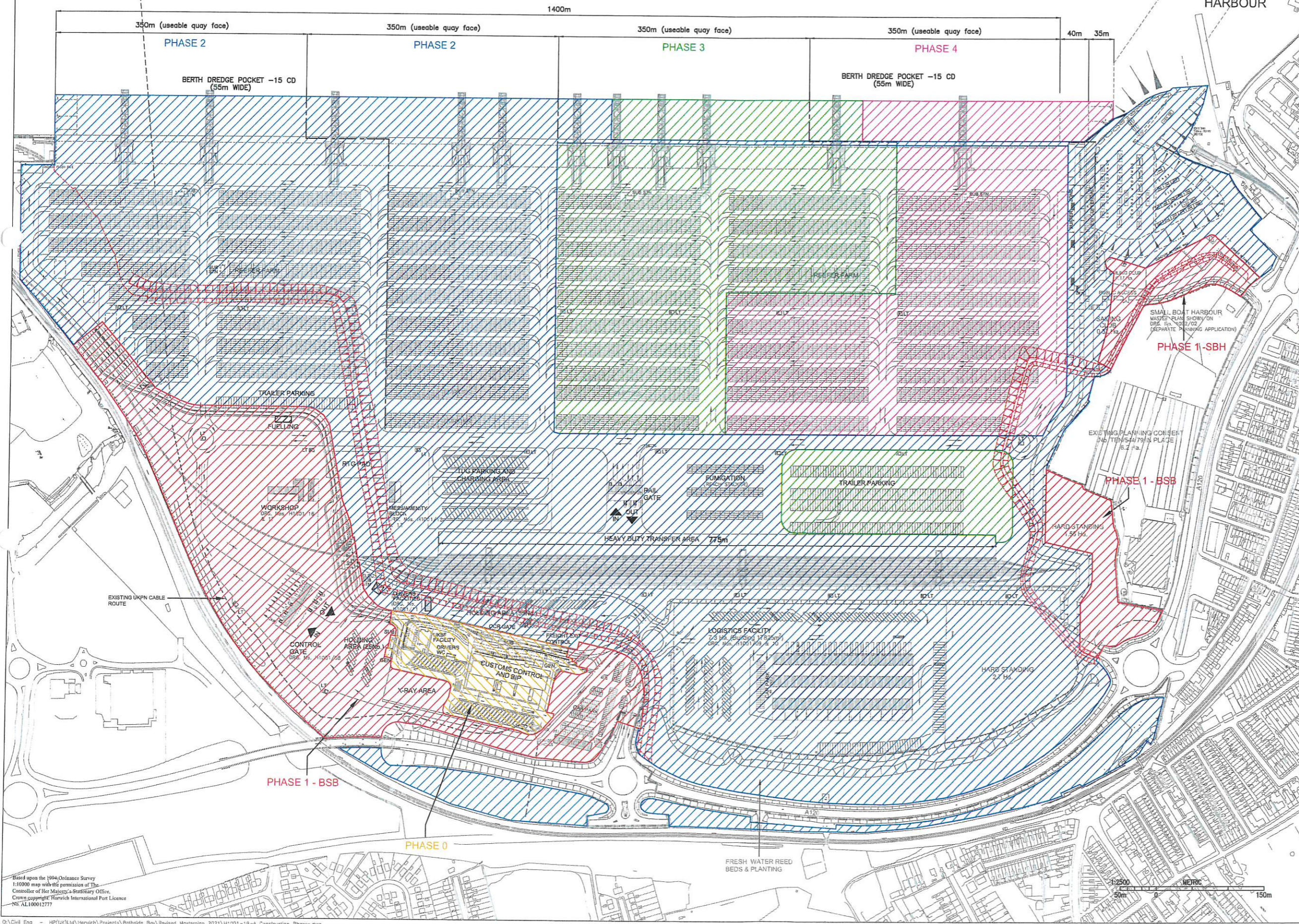
PARKESTON
HARWICH
ESSEX
CO12 4SR
TEL: 01255 252111
EMAIL: ENQUIRIES@DFRC.CO.UK

 A member of CK Hutchison Holdings

PROJECT
**BATHSIDE BAY DEVELOPMENT
HARWICH**

TITLE
CONSTRUCTION PHASES

SCALE	1:2500 @ A1	CHECKED	
DATE	02.04.03	APPROVED	HP(UK)
DRN	REA	ASSET No.	HP(UK)
STATUS	PROPOSED	SHT	REV
DRAWING No.	H1001/19		A



Based upon the 1994 Ordnance Survey
1:10000 map with the permission of The
Comptroller of Her Majesty's Stationery Office.
Crown Copyright © Harwich International Port Licence
NS AL100012777